



**Manufacturer & Stockist
of**

**Heating, Ventilation &
Air Movement Equipment**

Units 2 & 3
Bull Ring Trading Estate,
Green Street, Digbeth,
Birmingham, B12 0NB.
Tel: 0121 766 8126
Fax: 0121 766 7239

ACCESS DOOR RANGE

PRODUCT RANGE



- Insulated double skinned tabbed access door.
- Fire Retardant double skinned tabbed access door.
- Insulated double skinned pressed access door.
- Un-insulated double skinned pressed curved access door.
- Un-insulated double skinned pressed flat oval access door.

Available Options

- 25mm Deep.
- 50mm Deep.
- Factory fitted safety retaining chain.
- Factory fitted hinge.

Material Options

- Galvanised Mild Steel.
- 304 Stainless Steel.
- 316 Stainless Steel.

Description / Full Features:

Manufactured in the U.K. The AJS range of access doors have been designed for both strength and to gain easy and safe access to all in-duct equipment for inspection, maintenance and duct cleaning purposes.

Our range offers suitability for low to medium and high pressure systems for use on rectangular and spiral/ circular ductwork.

Certification

- BSRIA Quality approved pressure tested.

AJS are proud to be associated with:



Every effort is made to ensure the information in AJS literature is correct, however no warranty is given in this respect and the company shall not be liable as a result of any inaccuracy. The company has a policy of continuous product development and reserves the right to alter, at any time, specification without prior notice



**Manufacturer & Stockist
of**

**Heating, Ventilation &
Air Movement Equipment**

Units 2 & 3
Bull Ring Trading Estate,
Green Street, Digbeth,
Birmingham, B12 0NB.
Tel: 0121 766 8126
Fax: 0121 766 7239

TABBED ACCESS DOOR RANGE

PRODUCT RANGE

- Insulated double skinned tabbed access door.
- Fire Retardant double skinned tabbed access door.

Available Options

- 25mm Deep.
- 50mm Deep.
- Factory fitted safety retaining chain.
- Factory fitted hinge.

Material Options

- Galvanised Mild Steel.
- 304 Stainless Steel.
- 316 Stainless Steel.



- 316 Stainless Steel.

Description / Full Features:

Manufactured in the U.K. The AJS range of access doors have been designed for both strength and to gain easy and safe access to all in-duct equipment for inspection, maintenance and duct cleaning purposes.

Our range offers suitability for low to medium and high pressure systems for use on rectangular and spiral/ circular ductwork.

Certification

- BSRIA Quality approved pressure tested.

AJS are proud to be associated with:





**Manufacturer & Stockist
of**

**Heating, Ventilation &
Air Movement Equipment**

Units 2 & 3
Bull Ring Trading Estate,
Green Street, Digbeth,
Birmingham, B12 0NB.
Tel: 0121 766 8126
Fax: 0121 766 7239

STANDARD ACCESS DOOR RANGE

STANDARD CAM OPERATED INSULATED ACCESS DOOR



Description:

The AJS range of galvanised mild steel standard (Cam Operated) access doors, manufactured by ourselves in the UK, offers a quick and simple solution to gain easy and safe access to all in-duct equipment for inspection, maintenance and duct cleaning purposes.

Complete with a fully removable double skinned panel and radius knock over tabbed sub-frame.

Certification

- BSRIA Quality approved pressure tested.



Full Features:

- Easy to install
- Double skinned construction.
- Manufactured from 0.8mm galvanised mild steel (as standard).
- Encapsulating 25mm 60 kg/m² Rockwool Insulation.
- 6mm closed cell polyethylene gasket adhered to both inner & outer sub-frame, reducing the risk of air leakage.
- A positive seal is achieved via 1.2mm progressive action cam lock fasteners.
- Radius knock-over tabs, reducing the risk of personal injury when handling.

Door Depth

- 25mm Deep.
- 50mm Deep.

Fire Retardant Options

- Encapsulating 25mm 128kg Ceramic Blanket Insulation.
- 6mm (FMVSS 302) PVC Gasket adhered to both inner & outer sub-frame.

Material Options

- Galvanised Mild Steel.
- 304 Stainless Steel.
- 316 Stainless Steel.



**Manufacturer & Stockist
of**

**Heating, Ventilation &
Air Movement Equipment**

Units 2 & 3
Bull Ring Trading Estate,
Green Street, Digbeth,
Birmingham, B12 0NB.
Tel: 0121 766 8126
Fax: 0121 766 7239

CHAINED ACCESS DOOR RANGE

CAM OPERATED INSULATED CHAINED ACCESS DOOR

Description:



The AJS range of (Cam Operated) chained access doors, manufactured by ourselves in the UK, offering a quick and simple solution to gain easy and safe access to all in-duct equipment for inspection, maintenance and duct cleaning purposes.

As with our standard access door, a fully removable, double skinned panel and radius knock over tabbed sub-frame, with the additional feature of a factory fitted safety retaining chain attached to both the door panel and sub frame, to assist in the prevention of injury and damage from the panel falling/being dropped whilst Removing.

Certification

- BSRIA Approved Quality Pressure Tested.



Full Features.

- Easy to install.
- Double skinned construction.
- Manufactured from 0.8mm galvanised mild steel (as standard).
- Encapsulating 25mm 60 kg/m² Rockwool Insulation.
- 6mm closed cell polyethylene gasket adhered to both inner & outer sub-frame, reducing the risk of air leakage.
- A positive seal is achieved via 1.2mm progressive action cam lock fasteners.
- Radius knock-over tabs, reducing the risk of personal injury when handling.
- Factory fitted safety retaining chain (welded oval link, bright zinc plated mild steel) attached to both door panel & sub-frame.

Door Depth Options

- 25mm Deep.
- 50mm Deep.

Fire Retardant Options

- Encapsulating 25mm 128kg Ceramic Blanket Insulation.
- 6mm (FMVSS 302) PVC Gasket adhered to both inner & outer sub-frame.

Material Options

- Galvanised Mild Steel.
- 304 Stainless Steel.
- 316 Stainless Steel.

Every effort is made to ensure the information in AJS literature is correct, however no warranty is given in this respect and the company shall not be liable as a result of any inaccuracy. The company has a policy of continuous product development and reserves the right to alter, at any time, specification without prior notice



**Manufacturer & Stockist
of**

**Heating, Ventilation &
Air Movement Equipment**

Units 2 & 3
Bull Ring Trading Estate,
Green Street, Digbeth,
Birmingham, B12 0NB.
Tel: 0121 766 8126
Fax: 0121 766 7239

HINGED ACCESS DOOR RANGE

CAM OPERATED INSULATED HINGED ACCESS DOOR



Description:

The AJS range of (Cam Operated) hinged access doors manufactured by ourselves in the UK, offering a quick and simple solution to gain easy and safe access to all in-duct equipment for inspection, maintenance and duct cleaning purposes.

As with our standard access door, a removable double skinned panel and radius knock over tabbed sub-frame with the feature of a factory fitted full length piano hinge, attached to both the door panel and sub frame to assist in the additional prevention of injury and damage from the panel falling/being dropped whilst removing.

Certification

- BSRIA Approved Quality Pressure Tested.



Full Features:

- Easy to install.
- Double skinned construction.
- Manufactured from 0.8mm galvanised mild steel (as standard).
- Encapsulating 25mm 60 kg/m² Rockwool Insulation.
- 6mm closed cell polyethylene gasket adhered to both inner & outer sub-frame, reducing the risk of air leakage.
- A positive seal is achieved via 1.2mm progressive action cam lock fasteners.
- Radius knock-over tabs, reducing the risk of personal injury when handling.
- Factory fitted full length piano hinge (1.5" open, bright zinc plated mild steel) attached to both door panel & sub-frame.

Door Depth Options

- 25mm Deep.
- 50mm Deep.

Fire Retardant Options

- Encapsulating 25mm 128kg Ceramic Blanket Insulation.
- 6mm (FMVSS 302) PVC Gasket adhered to both inner & outer sub-frame.

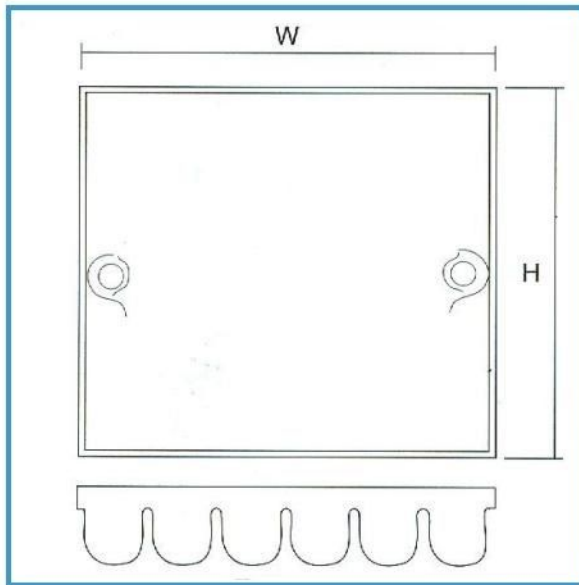
Material Options

- Galvanised Mild Steel.
- 304 Stainless Steel.
- 316 Stainless Steel.

Every effort is made to ensure the information in AJS literature is correct, however no warranty is given in this respect and the company shall not be liable as a result of any inaccuracy. The company has a policy of continuous product development and reserves the right to alter, at any time, specification without prior notice

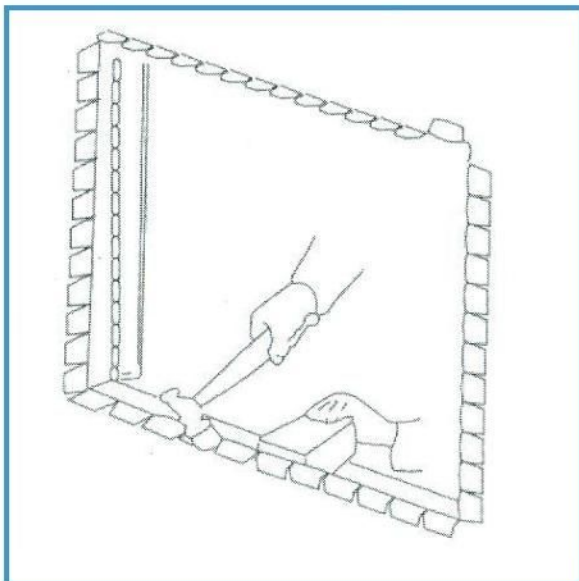
ACCESS DOOR DIMENSIONS & INSTALLATION METHOD

SQUARE & RECTANGULAR ACCESS DOORS



INSTALLATION METHOD

1. Cut opening in duct to dimensions shown.
2. Offer access panel sub-frame into opening and knock over tab edges while supporting sub-frame firmly onto duct.



STANDARD SIZES HELD IN STOCK

DOOR & FRAME	REQUIRED DUCT
OVERALL SIZE	OPENING SIZE
W (mm) X H (mm)	W (mm) X H (mm)
100 X 100	60 X 60
150 X 100	110 X 60
150 X 150	110 X 110
200 X 100	160 X 60
200 X 150	160 X 110
200 X 200	160 X 160
250 X 150	210 X 110
250 X 200	210 X 160
250 X 250	210 X 210
300 X 150	260 X 110
300 X 200	260 X 160
300 X 300	260 X 260
400 X 200	360 X 160
400 X 300	360 X 260
400 X 400	360 X 360
450 X 300	410 X 260
450 X 450	410 X 410
500 X 500	460 X 460
600 X 300	560 X 260
600 X 400	560 X 360
600 X 450	560 X 410
600 X 600	560 X 560

ALL SIZES ARE APPROXIMATE

EASY FIT ACCESS DOOR RANGE

EASY FIT UN-INSULATED ACCESS DOOR



Description:

The AJS range of easy fit access doors are manufactured by ourselves in the UK and have been designed for both strength and to gain safe and easy access to all in-duct equipment for inspection, maintenance and duct cleaning purposes.

Size Options - Suitable for Spiral/Circular Duct.

- Type A - 200mmx80mm to suit 80 - 150mm Ø
- Type B - 250mmx150mm to suit 150 - 450mm Ø
- Type C - 400mmx300mm to suit 400 - 1016mm Ø

Suitable for Rectangular & Flat Oval Duct.

- Type A - 200mmx80mm
- Type B - 250mmx150mm
- Type C - 400mmx300mm

Full Features:

- Double skinned construction.
- Manufactured from 0.8mm galvanised mild steel (as standard).
- Individually pressed to suit duct diameter.
- 6mm closed cell polyethylene gasket adhered to the inner panel sealing the duct internally.
- A positive seal is achieved via 2 external thermo plastic, tri-star threaded (m10) hand wheels, tightened onto press fitted internal fully threaded (m10) set bolts. (Zinc plated mild steel)
- Conical stainless steel springs fitted between the inner and outer panel offers a sprung separation for ease of installation and removal.
- Set bolt ends are pressed to purposely defect the thread ends, not allowing the access door to be completely disassembled, reducing the risk of the inner panel separating and falling into the duct, causing damage to other equipment.
- Self adhesive disposable duct hole cut out template, complete with installation instructions packaged with each access door.
- Optional - rubber edging strip (cut to size) for the duct hole rough edges, reducing the risk of personal injury when the access door is removed for duct cleaning and maintenance purposes.

Available Options

- Rubber - Safe edging strip.
- Factory fitted safety retaining chain.

Material Options

- Galvanised Mild Steel.
- 304 Stainless Steel.
- 316 Stainless Steel.



**Manufacturer & Stockist
of**

**Heating, Ventilation &
Air Movement Equipment**

Units 2 & 3
Bull Ring Trading Estate,
Green Street, Digbeth,
Birmingham, B12 0NB.
Tel: 0121 766 8126
Fax: 0121 766 7239

EASY FIT STANDARD ACCESS DOOR RANGE

EASY FIT UN-INSULATED STANDARD ACCESS DOOR

Description:

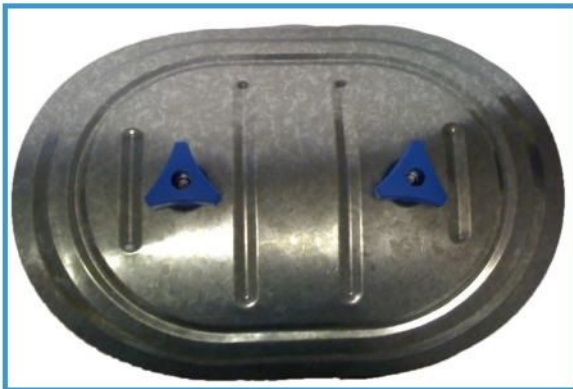
The AJS range of easy fit galvanized mild steel standard access doors are manufactured by ourselves in the UK and have been designed for both strength and to gain safe and easy access to all in-duct equipment for inspection, maintenance and duct cleaning purposes.

Size Options

- Type A - 200mmx80mm to suit 80 -150mm Ø
- Type B - 250mmx150mm to suit 150 - 450mm Ø
- Type C - 400mmx300mm to suit 400 - 1016mm Ø

Optional

- Rubber edging strip (cut to size) for the duct hole rough edges, reducing the risk of personal injury when the access door is removed for duct cleaning and maintenance purposes.



Full Features:

- Double skinned construction.
- Manufactured from 0.8mm galvanised mild steel (as standard).
- Individually pressed to suit duct diameter.
- 6mm closed cell polyethylene gasket adhered to the inner panel sealing the duct internally.
- A positive seal is achieved via 2 external thermo plastic, tri-star threaded (m10) hand wheels, tightened onto press fitted internal fully threaded (m10) set bolts. (Zinc plated mild steel)
- Conical stainless steel springs fitted between the inner and outer panel offers a sprung separation for ease of installation and removal.
- Set bolt ends are pressed to purposely defect the thread ends, not allowing the access door to be completely disassembled, reducing the risk of the inner panel separating and falling into the duct, causing damage to other equipment.
- Self adhesive disposable duct hole cut out template, complete with installation instructions packaged with each access door.
- Optional - rubber edging strip (cut to size) for the duct hole rough edges, reducing the risk of personal injury when the access door is removed for duct cleaning and maintenance purposes.

Available Options

- Rubber - Safe edging strip.
- Factory fitted safety retaining chain.

Material Options

- Galvanised Mild Steel.
- 304 Stainless Steel.
- 316 Stainless Steel.



**Manufacturer & Stockist
of**

**Heating, Ventilation &
Air Movement Equipment**

Units 2 & 3
Bull Ring Trading Estate,
Green Street, Digbeth,
Birmingham, B12 0NB.
Tel: 0121 766 8126
Fax: 0121 766 7239

EASY FIT CHAINED ACCESS DOOR RANGE

EASY FIT UN-INSULATED CHAINED ACCESS DOOR



Description:

The AJS range of easy fit galvanized mild steel Chained access doors are manufactured by ourselves in the UK and have been designed for both strength and to gain safe and easy access to all in-duct equipment for inspection, maintenance and duct cleaning purposes. As with our standard access door, a fully removable, double skinned panel with the additional feature of a factory fitted safety retaining chain (one end) attached to the outer door panel, leaving the other end of the chain to be fixed to the duct to assist in the prevention of injury and damage from the panel falling/being dropped whilst removing.

Size Options

- Type A - 200mmx80mm to suit 80 - 150mm Ø
- Type B - 250mmx150mm to suit 150 - 450mm Ø
- Type C - 400mmx300mm to suit 400 - 1016mm Ø

Full Features:

- Double skinned construction.
- Manufactured from 0.8mm galvanised mild steel (as standard).
- Individually pressed to suit duct diameter.
- 6mm closed cell polyethylene gasket adhered to the inner panel sealing the duct internally.
- A positive seal is achieved via 2 external thermo plastic, tri-star threaded (m10) hand wheels, tightened onto press fitted internal fully threaded (m10) set bolts. (Zinc plated mild steel)
- Conical stainless steel springs fitted between the inner and outer panel offers a sprung separation for ease of installation and removal.
- Set bolt ends are pressed to purposely defect the thread ends, not allowing the access door to be completely disassembled, reducing the risk of the inner panel separating and falling into the duct, causing damage to other equipment.
- Self adhesive disposable duct hole cut out template, complete with installation instructions packaged with each access door.
- Optional - rubber edging strip (cut to size) for the duct hole rough edges, reducing the risk of personal injury when the access door is removed for duct cleaning and maintenance purposes.
- Factory fitted safety retaining chain.

Material Option

- Galvanised Mild Steel.
- 304 Stainless Steel.
- 316 Stainless Steel.



**Manufacturer & Stockist
of**

**Heating, Ventilation &
Air Movement Equipment**

Units 2 & 3
Bull Ring Trading Estate,
Green Street, Digbeth,
Birmingham, B12 0NB.
Tel: 0121 766 8126
Fax: 0121 766 7239

EASY FIT FLAT OVAL ACCESS DOOR RANGE

EASY FIT UN-INSULATED FLAT OVAL ACCESS DOOR

Description:

The AJS range of easy fit galvanized mild steel flat oval access doors are manufactured by ourselves in the UK and have been designed for both strength and to gain safe and easy access to all in-duct equipment for inspection, maintenance and duct cleaning purposes.

Size Options

- Type A - 200mmx80mm
- Type B - 250mmx150mm
- Type C - 400mmx300mm



Full Features:

- Double skinned construction.
- Manufactured from 0.8mm galvanised mild steel (as standard).
- 6mm closed cell polyethylene gasket adhered to the inner panel sealing the duct internally.
- A positive seal is achieved via 2 external thermo plastic, tri-star threaded (m10) hand wheels, tightened onto press fitted internal fully threaded (m10) set bolts. (Zinc plated mild steel)
- Conical stainless steel springs fitted between the inner and outer panel offers a sprung separation for ease of installation and removal.
- Set bolt ends are pressed to purposely defect the thread ends, not allowing the access door to be completely disassembled, reducing the risk of the inner panel separating and falling into the duct, causing damage to other equipment.
- Self adhesive disposable duct hole cut out template, complete with installation instructions packaged with each access door.
- Optional - rubber edging strip (cut to size) for the duct hole rough edges, reducing the risk of personal injury when the access door is removed for duct cleaning and maintenance purposes.

Material Option

- Galvanised Mild Steel.
- 304 Stainless Steel.
- 316 Stainless Steel.

EASY FIT FLAT OVAL CHAINED ACCESS DOOR RANGE

EASY FIT UN-INSULATED FLAT OVAL CHAINED ACCESS DOOR

Description:



The AJS range of easy fit galvanized mild steel chained flat oval access doors are manufactured by ourselves in the UK and have been designed for both strength and to gain safe and easy access to all in-duct equipment for inspection, maintenance and duct cleaning purposes.

As with our standard access door, a fully removable, double skinned panel with the additional feature of a factory fitted safety retaining chain (one end) attached to the outer door panel, leaving the other end of the chain to be fixed to the duct to assist in the prevention of injury and damage from the panel falling/being dropped whilst removing.

Size Options

- Type A - 200mmx80mm
- Type B - 250mmx150mm
- Type C - 400mmx300mm

Full Features:

- Double skinned construction.
- Manufactured from 0.8mm galvanised mild steel (as standard).
- 6mm closed cell polyethylene gasket adhered to the inner panel sealing the duct internally.
- A positive seal is achieved via 2 external thermo plastic, tri-star threaded (m10) hand wheels, tightened onto press fitted internal fully threaded (m10) set bolts. (Zinc plated mild steel)
- Conical stainless steel springs fitted between the inner and outer panel offers a sprung separation for ease of installation and removal.
- Set bolt ends are pressed to purposely defect the thread ends, not allowing the access door to be completely disassembled, reducing the risk of the inner panel separating and falling into the duct, causing damage to other equipment.
- Self adhesive disposable duct hole cut out template, complete with installation instructions packaged with each access door.
- Optional - rubber edging strip (cut to size) for the duct hole rough edges, reducing the risk of personal injury when the access door is removed for duct cleaning and maintenance purposes.
- Factory fitted safety retaining chain.

Material Option

- Galvanised Mild Steel.
- 304 Stainless Steel.
- 316 Stainless Steel.

ACCESS DOOR DIMENSIONS & INSTALLATION METHOD

EASY FIT SPIRAL / CIRCULAR & FLAT OVAL ACCESS DOORS

INSTALLATION METHOD

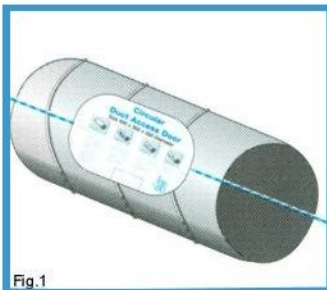


Fig.1

Stage 1. (See fig.1)

1. Locate and highlight central line on the duct.
2. After Aligning the template with the centre line (using the datum line). Attach by removing the backing tape.
3. Cut the opening to the outside of the AJS template.

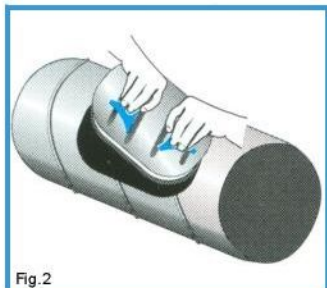


Fig.2

Stage 2. (See Fig.2)

1. Locate captive hand wheels and slacken fully.
2. At a 30° angle from the centre line, feed the inner panel through the duct opening.

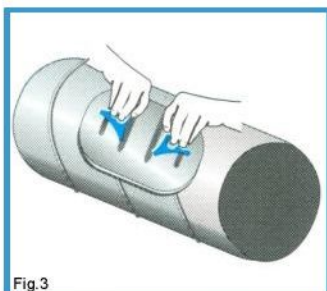


Fig.3

Stage 3. (See Fig.3)

1. Bringing the door to a central position, locate to the inner door panel by pulling slowly towards you.

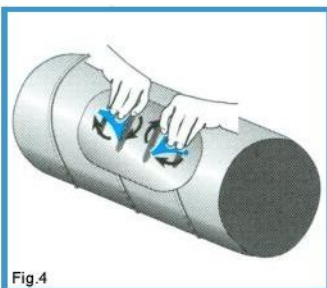


Fig.4

Stage 4.(See Fig.4)

1. Fully tighten the hand wheels to seal the door to the duct.
2. Secure safety chain to duct if applicable. **(Chained Access Doors ONLY)**

STANDARD SIZES HELD IN STOCK

OVERALL DOOR SIZE	TO SIUT DUCT SIZE
W (mm) X H (mm)	DIAMETER (mm)
200 X 80	80
200 X 80	100
200 X 80	125
200 X 80	150
250 X 150	150
250 X 150	160
250 X 150	180
250 X 150	200
250 X 150	224
250 X 150	250
250 X 150	280
250 X 150	300
250 X 150	315
250 X 150	355
250 X 150	400
250 X 150	450
400 X 300	400
400 X 300	450
400 X 300	500
400 X 300	560
400 X 300	630
400 X 300	711
400 X 300	762
400 X 300	813
400 X 300	914
400 X 300	1016

ALL SIZES ARE APPROXIMATE

PRESSED ACCESS DOOR RANGE

INSULATED PRESSED ACCESS DOOR

Description:



The AJS range of pressed access doors have been designed to gain easy and safe access to all in-duct equipment for inspection, maintenance and duct cleaning. Suitable for low to high pressure systems, comprising of a seamless one piece, pre pierced (for ease of installation) sub frame that can be either flush or exterior mounted, together with a double skinned insulated door panel complete with factory fitted safety retaining chain. (as standard)

Size Options

- Type A - 233 x 143
- Type B - 362 x 227
- Type C - 494 x 354
- Type D - 647 x 496

Certification

- BSRIA Quality approved pressure tested.



Full Features:

- Double skinned construction.
- Manufactured from 0.7mm galvanised mild steel (as standard).
- Encapsulating 21mm fire retardant thermal and acoustic Insulation.
- One piece extruded neoprene, high compression seal with self-extinguishing fire properties.
- Progressive action cam lock fasteners.
- Zinc plated safety retaining chain fitted as standard,
- Hole cutting template supplied with every carton

Available Options

- 25mm Deep.
- Insulation spacer frame - 50mm
- Factory fitted safety retaining chain. (as standard)
- Factory fitted hinge.

Material Options

- Galvanised mild steel.
- Stainless steel.

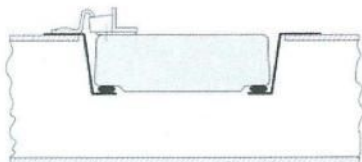
PRESSED ACCESS DOOR RANGE

INSULATED PRESSED ACCESS DOOR

Mounting Options

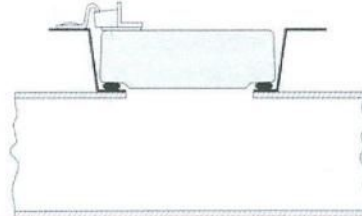
Flush Mounting

for un-insulated duct



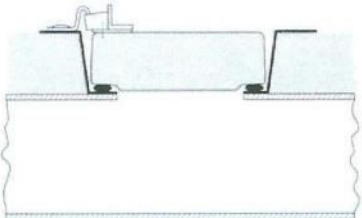
Exterior Mounting

for un-insulated duct



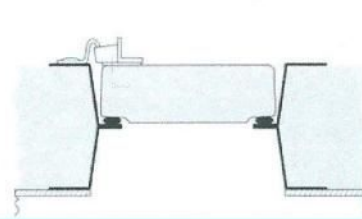
Exterior Mounting

for duct with 25mm insulation

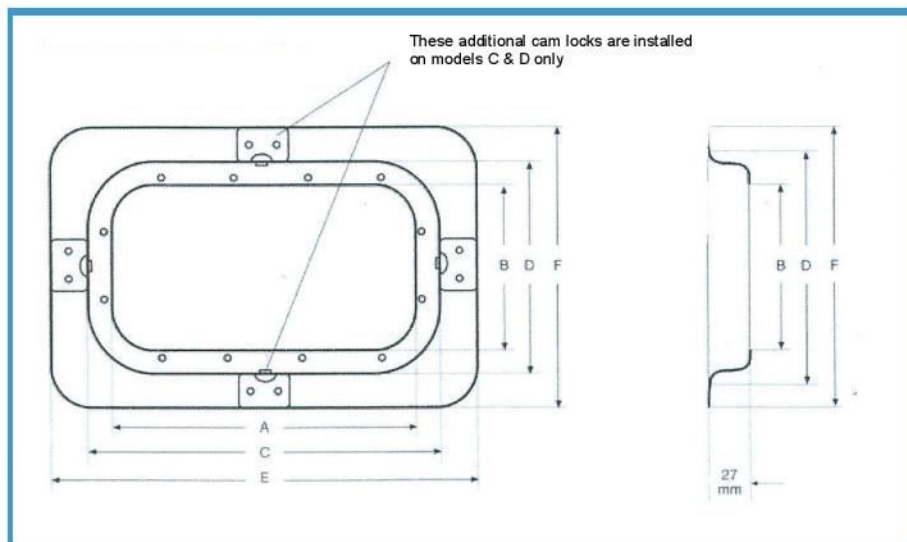


Exterior Mounting

For duct with 50mm insulation using optional spacer frame



Dimensional Data



	Type A	Type B	Type C	Type D
Nominal Door Size	233 x143	362 x 227	494 x354	647 496
No. Cams Per Door	2	2	4	4
A - Dimn (mm)	205	330	460	610
B - Dimn (mm)	115	195	320	462
C - Dimn (mm)	237	367	500	653
D - Dimn (mm)	147	232	360	502
E - Dimn (mm)	281	414	552	705
F - Dimn (mm)	191	279	412	550
Unit Weight Kg	0.83	1.60	2.95	5.72
Qty Per Carton	10	5	5	4
Weight Per Carton Kg	8.90	8.50	15.70	24.10

PRESSURE TEST ON DUCT ACCESS DOOR

Carried out for & on the behalf of:

KK Manufacturing & Distribution
a division of AJ Services - Established 1986
Unit 7 / 78 Hutton Road
Handsworth
Birmingham
B20 3RD

Test carried out by:

P N Stonard & A L Fricker



1. INTRODUCTION

This report concerns pressure tests carried out on a duct access door and frame assembly. The sample was manufactured by KK Manufacturing, who also commissioned the test work carried out in the BSRIA laboratories during the period 3 February to 5 February 1992

2. OBJECTIVE

To determine the leakage rate from the door and frame assembly.

3. ITEMS SUPPLIED FOR TEST

The items supplied consisted of an access door and frame of overall dimensions 305mm x 305mm. This was mounted on a galvanised steel plenum 600mm x 600mm x 600mm. The whole assembly had been sealed to the plenum using a mastic sealant and the door frame using a foam strip arrangement.

4. TEST METHOD

Four sets of tests were carried out. Pressures was applied to the plenum in stages up to maximums of 2500 Pa positive and 750 Pa negative.

These were limits stated in DW142 HVCA specification for high pressure Class 'D' ductwork.

Tests were conducted with the plenum assembly "as supplied" to give gross leakage rate and with the access door assembly blanked off to give a net leakage rate. The difference between the two gave the leakage through the door assembly. Air was supplied and extracted via a centrifugal fan and venturi arrangement. Pressures being measured using digital micromanometers.

5. RESULTS

Gross Leakage (system, plenum, door assembly)

PLENUM PRESSURE Pa	VENTURI	
	DIFFERENTIAL PRESSURE Pa	LEAKAGE RATE 1/s
530	1.2	Less than 0.05
970	3.6	0.110
1500	9.2	0.175
1990	15.6	0.232
2480	25.6	0.302
-470	1.9	<0.05
-520	2.6	<0.05
-770	4.2	0.117

PLENUM PRESSURE Pa	VENTURI	
	DIFFERENTIAL PRESSURE Pa	LEAKAGE RATE 1/s
440	1.3	<0.05
650	2.5	<0.05
1050	4.7	0.128
1600	9.9	0.182
1900	15.1	0.230
2490	25.0	0.300
-490	2.1	<0.05
-740	4.0	0.115
-760	4.3	0.118

6. CONCLUSIONS

The leakage of the access door and frame was less than 0.05 1/s at all test pressures

The test pressures did not cause permanent deformation.



The Building Services Research and Information Association
Old Bracknell Lane West, Bracknell, Berkshire, RG12 4AH
Tel: (0344) 426511. Telex: 848288 BSRIAC G. Fax: 0344) 487575

A company limited by guarantee registered in England No. 632760

