



Manufacturer & Stockist
of

Heating, Ventilation &
Air Movement Equipment

Units 2 & 3
Bull Ring Trading Estate,
Green Street, Digbeth,
Birmingham, B12 0NB.
Tel: 0121 766 8126
Fax: 0121 766 7239
www.ajs-vent.co.uk

PRESSED ACCESS DOOR RANGE

INSULATED PRESSED ACCESS DOOR



Description:

The AJS range of pressed access doors have been designed to gain easy and safe access to all in-duct equipment for inspection, maintenance and duct cleaning. Suitable for low to high pressure systems, comprising of a seamless one piece, pre pierced (for ease of installation) sub frame that can be either flush or exterior mounted, together with a double skinned insulated door panel complete with factory fitted safety retaining chain. (as standard)

Size Options

- Type A - 233 x 143
- Type B - 362 x 227
- Type C - 494 x 354
- Type D - 647 x 496

Certification

- BSRIA Quality approved pressure tested.



Full Features:

- Double skinned construction.
- Manufactured from 0.7mm galvanised mild steel (as standard).
- Encapsulating 21mm fire retardant thermal and acoustic Insulation.
- One piece extruded neoprene, high compression seal with self-extinguishing fire properties.
- Progressive action cam lock fasteners.
- Zinc plated safety retaining chain fitted as standard,
- Hole cutting template supplied with every carton

Available Options

- 25mm Deep.
- Insulation spacer frame - 50mm
- Factory fitted safety retaining chain. (as standard)
- Factory fitted hinge.

Material Options

- Galvanised mild steel.
- Stainless steel.



Manufacturer & Stockist
of

Heating, Ventilation &
Air Movement Equipment

Units 2 & 3
Bull Ring Trading Estate,
Green Street, Digbeth,
Birmingham, B12 0NB.
Tel: 0121 766 8126
Fax: 0121 766 7239
www.ajs-vent.co.uk

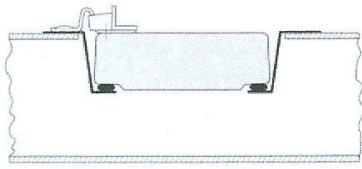
PRESSED ACCESS DOOR RANGE

INSULATED PRESSED ACCESS DOOR

Mounting Options

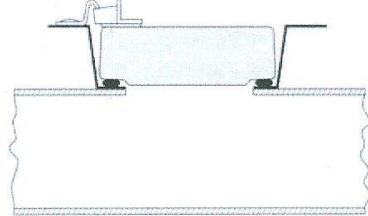
Flush Mounting

for un-insulated duct



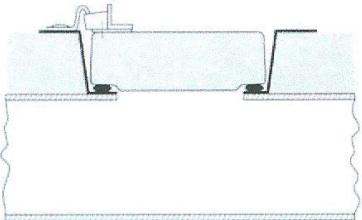
Exterior Mounting

for un-insulated duct



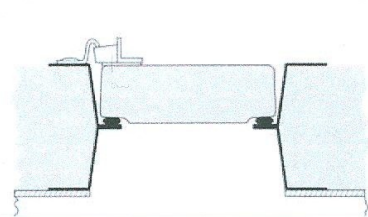
Exterior Mounting

for duct with 25mm insulation

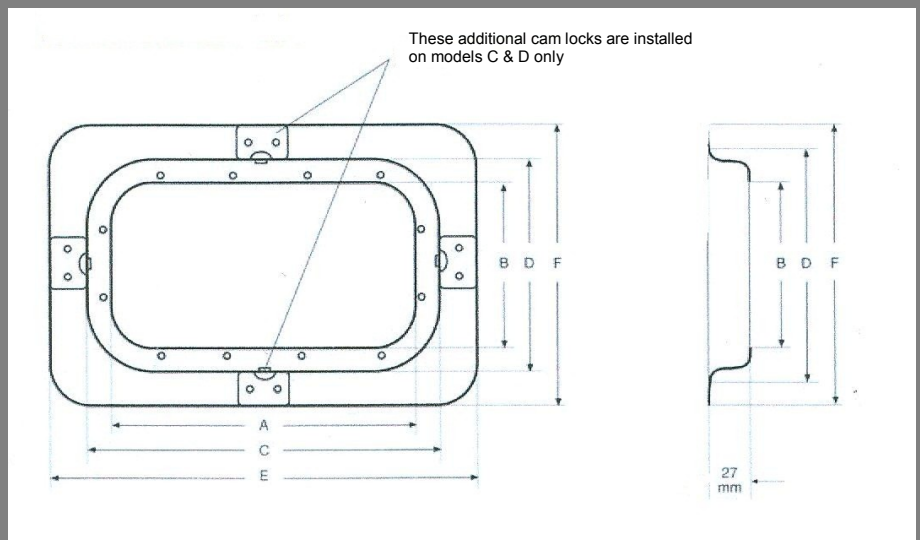


Exterior Mounting

For duct with 50mm insulation using optional spacer frame



Dimensional Data



	Type A	Type B	Type C	Type D
Nominal Door Size	233 x 143	362 x 227	494 x 354	647 x 496
No. Cams Per Door	2	2	4	4
A - Dimn (mm)	205	330	460	610
B - Dimn (mm)	115	195	320	462
C - Dimn (mm)	237	367	500	653
D - Dimn (mm)	147	232	360	502
E - Dimn (mm)	281	414	552	705
F - Dimn (mm)	191	279	412	550
Unit Weight Kg	0.83	1.60	2.95	5.72
Qty Per Carton	10	5	5	4
Weight Per Carton Kg	8.90	8.50	15.70	24.10

Every effort is made to ensure the information in AJS literature is correct, however no warranty is given in this respect and the company shall not be liable as a result of any inaccuracy. The company has a policy of continuous product development and reserves the right to alter, at any time, specification without prior notice